



AX3000 Wi-Fi 6 Air Mesh Router 3-Pack

1 Archer Air R5 and 2 Archer Air E5



Archer Air R5(3-pack)

Wi-Fi Dead-Zone
Killer

Multiple Wall-Mounting
Options

Easier-than-Ever
Setup

Parental Controls

Highlights

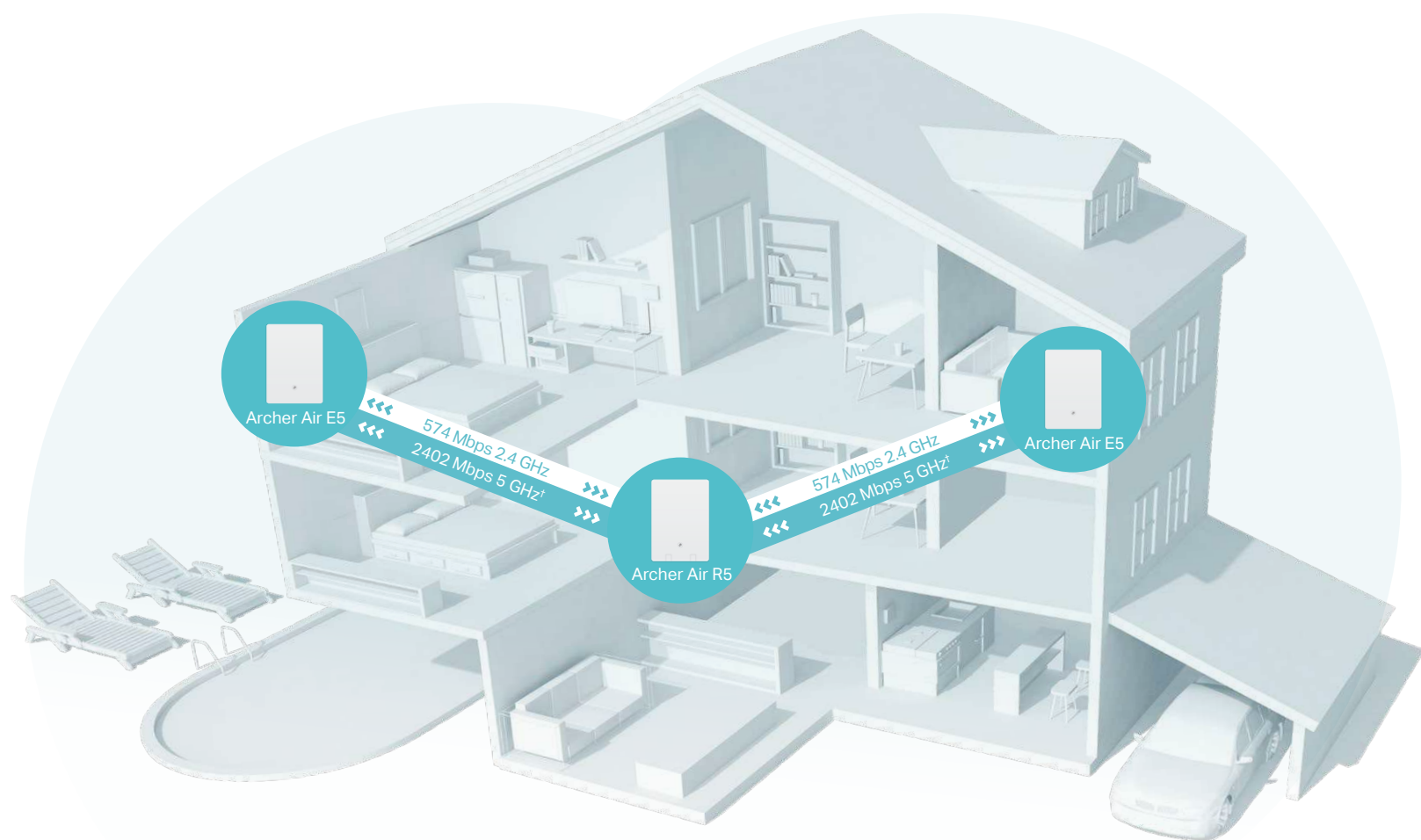
One-Time Setup for Superior Whole Home Mesh Wi-Fi

 Wi-Fi Dead-Zone Killer

 Smart Roaming^s

 One Wi-Fi Name

 Unified Management



Air Mesh Router (3-pack) makes setup easier than ever. Just set it up once, and it will auto-sync all Air units. Walk through your home and enjoy a fast and strong whole home Mesh Wi-Fi.

Wi-Fi 6[®] Faster. Broader. Unstoppable.

Stream and game with lightning-fast speeds up to 3 Gbps (2402 Mbps on the 5 GHz band and 574 Mbps on the 2.4 GHz band) for truly outstanding online experiences.[†]



Faster Wi-Fi 6 Speed

Enjoy full access to 8K streaming and high-speed downloading with HE160 on the 5 GHz band providing doubled bandwidth.



Connect Numerous Devices

Allow more applications to run at the same time. OFDMA transmits data to multiple devices simultaneously across 4 streams, drastically reducing latency.



Smart Power Saving

Conserve the power of your mobile devices by scheduling the connection time of battery-powered devices with Target Wake Time.



Backwards Compatible

Take your Wi-Fi to the next level while being backwards compatible with 802.11a/b/g/n/ac/ax Wi-Fi standards.

Highlights

TP-Link HomeShield

TP-Link's premium security services keep your home network safe with cutting-edge fetures for network and IoT protection.[§]



Network Protection

Detect cyber threats to keep your privacy and connected devices well protected.



Quality of Service (QoS)

Prioritize your bandwidth needs to get a better networking experience.



Parental Controls

Manage online time and block inappropriate content to keep families healthy online.



Comprehensive Reports

Gain full statistics and insights to help you know your home network better.

Smart Antennas Boosts Wi-Fi Coverage

Built-in smart antennas use intelligent algorithms to auto-detect your devices and concentrate strong signals towards them to provide the optimal performance.

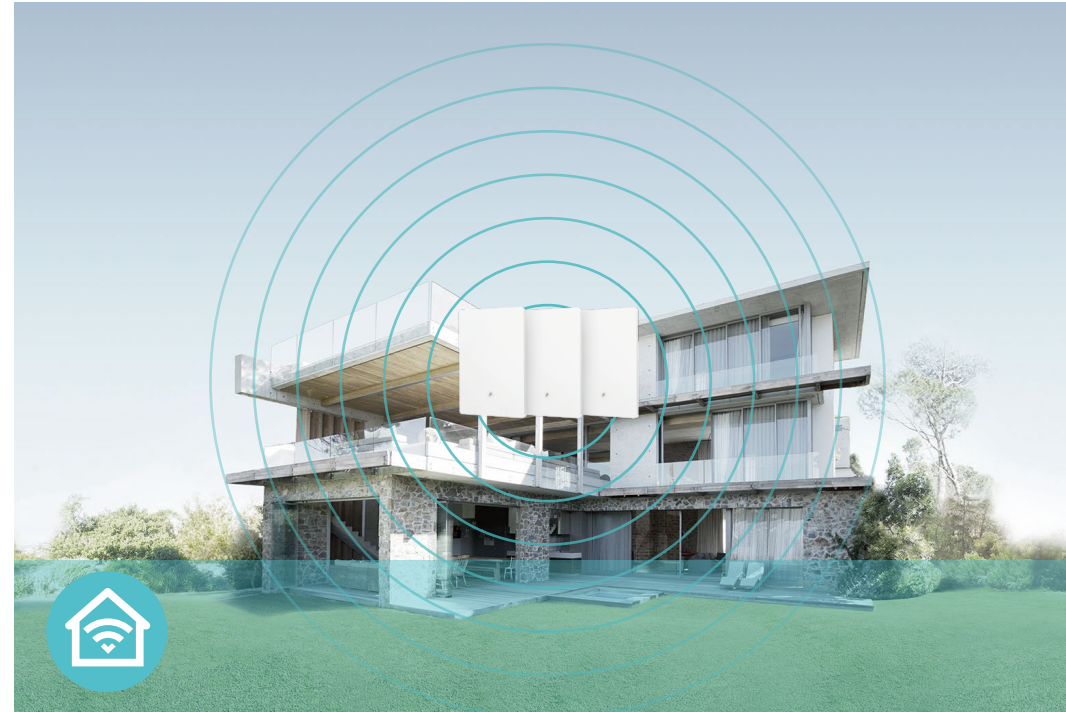


Features



Superior Wi-Fi Speed

- **AX Tech** – 802.11ax (also known as Wi-Fi 6) features advanced technologies including OFDMA and 1024QAM, drastically increasing the speed and efficiency of the entire network[†]
- **Ultimate Wireless Speed** – 574 Mbps on 2.4 GHz (802.11ax) + 2402 Mbps on 5 GHz (802.11ax)
- **Gigabit Internet Access** – Take full advantages of broadband speeds up to 1 Gbps[^]
- **Smart Connect** – Intelligently assigns each device to the best Wi-Fi band for optimal performance.



Broad Wi-Fi Range

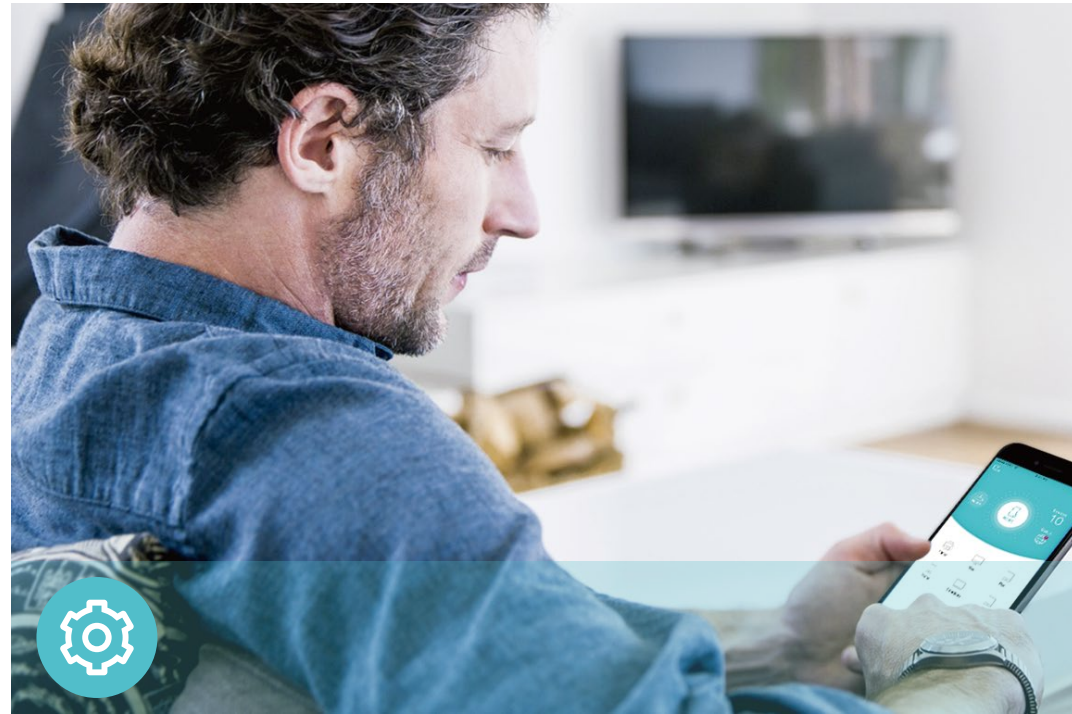
- **Smart Antennas** – Four internal antennas deliver a Wi-Fi signal to every corner of your home, making all of your connections more efficient and stable
- **Beamforming Technology** – Concentrates Wi-Fi signals towards individual devices to ensure stronger connections
- **Airtime Fairness** – Balances bandwidth of connected devices to improve overall throughput and efficiency



Flexible Installation

- **Ultra-thin Design** – Ultra-thin and streamlined design with 8mm slim body for Air E5 extender and 10.8mm thickness for Air R5 router.
- **Multiple Wall-Mounting Options** – Stick the router and extender to the wall via 3M adhesives or mount it via a mounting bracket.

Features



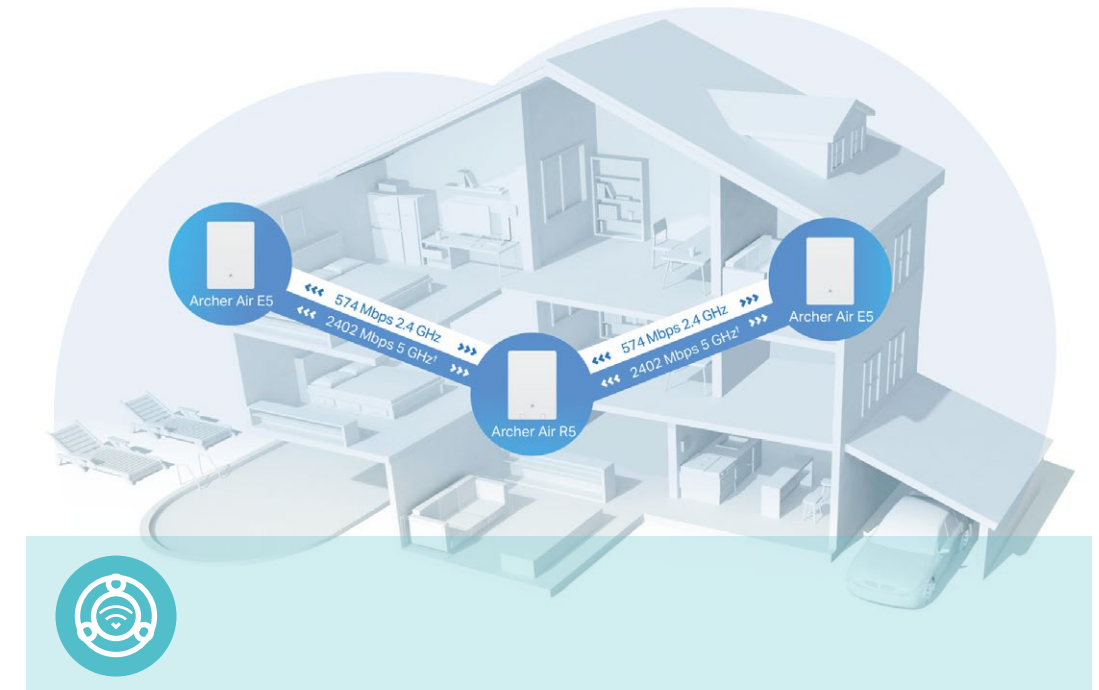
Ease of Use

- One-Time Setup for Whole Home Mesh Wi-Fi – Set it up once, and it will auto-sync all Air units.
- Hassle-free Management with Tether App – Network management is made easy with the TP-Link Tether app, available on any Android and iOS device.
- Intuitive Web UI – Ensures quick and simple installation without hassle.
- WPS (Wi-Fi Protected Setup) – Help you to quickly and securely connect your devices to the router's network with a tap.
- Backwards Compatible – Take your Wi-Fi to the next level while being backwards compatible with existing 802.11a/b/g/n/ac/ax Wi-Fi standards.
- Works with Amazon Alexa and Google Assistant – Utilize Amazon Alexa and Google Assistant to control everything via voice commands to enjoy truly intelligent life.



Robust Security

- HomeShield – TP-Link's premium security services keep your home network safe with cutting-edge features for network and IoT protection.*
- Parental Controls – Manage online time and block inappropriate content to control your family's digital habits.
- Guest Network – Provides separate access for guests to secure the home network.
- Advanced WPA3 Encryptions – The latest WiFi security protocol, WPA3, brings new capabilities to improve cybersecurity in personal networks.**
- Access Control – Establishes a whitelist or blacklist to allow or restrict certain devices to access the internet.
- Secure VPN Access – Connects to a private network with a safe and secure OpenVPN and PPTP VPN connection



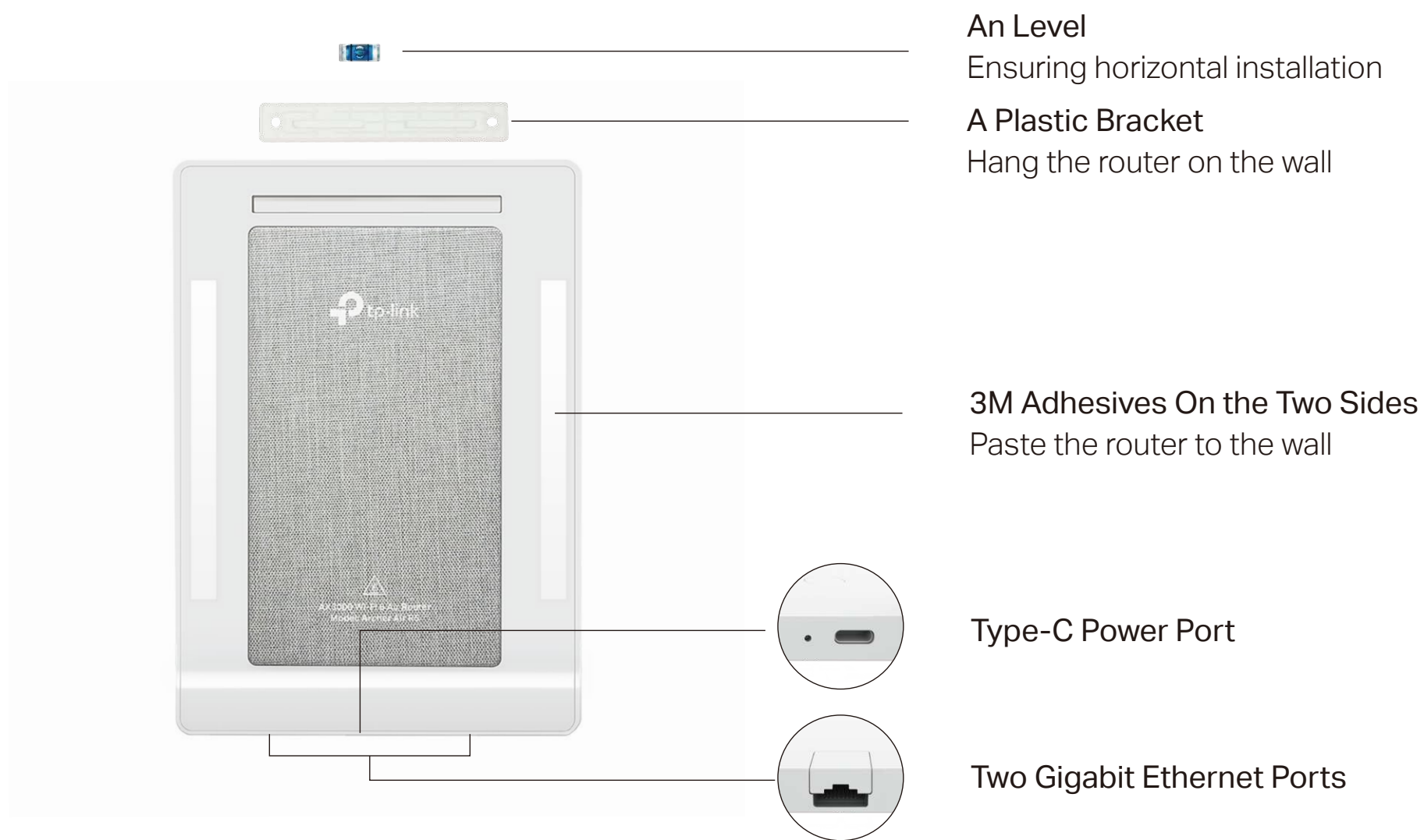
Seamless EasyMesh Network

- Seamless Roaming – Connects mobile devices to your routers or extenders that provide the best coverage. Devices compatible with EasyMesh also share a single Wi-Fi name so you stay connected in every room.
- One-Click Settings – Within 2 minutes, press the WPS button on the router and the extender, then the EasyMesh network is all set up. TP-Link routers in factory settings can be connected to form an EasyMesh network directly without any redundant setup.
- Flexible Scalability – Flexibly scale your home networking with different vendors, different topologies, different Protocols, and different product categories.

Specifications (R5)

Hardware (R5)

- Ports: 1 × Gigabit WAN Port + 1 × Gigabit LAN Port; 1 × Power Port
- LED & Button: Status LED and WPS button (on front panel)



Dimensions: 210 × 148 × 10.8 mm

Software

- WAN Type: Dynamic IP/Static IP/PPPoE/PPTP/L2TP
- Management: Access Control, Local Management, Remote Management
- DHCP: Server, DHCP Client List, Address Reservation
- NAT Forwarding: Port Forwarding, Port Triggering, UPnP, DMZ
- Dynamic DNS: DynDns, NO-IP, TP-Link
- Network Access Management: Access Control, Parental Controls, Local Management Control
- Firewall Security: SPI Firewall, IP and MAC Address Binding
- Protocols: IPv4, IPv6
- Guest Network: 2.4 GHz Guest Network, 5 GHz Guest Network
- VPN Server: OpenVPN, PPTP VPN

Wireless

- Wireless: 2402 Mbps (5 GHz) + 574 Mbps (2.4 GHz), compatible with 11a/b/g/n/ac/ax Wi-Fi standards
- Frequency: 2.4 GHz and 5 GHz
- Reception Sensitivity:
 - 2.4GHz:
 - 11g 6Mbps:-96dBm, 11g 54Mbps:-78dBm
 - 11n HT20 MCS7:-76dBm, 11n HT40 MCS7:-72dBm
 - 11ax HE20 MCS0: -95dBm, 11ax HE20 MCS11: -65dBm
 - 11ax HE40 MCS0: -93dBm, 11ax HE40 MCS11: -62dBm
 - 5GHz:
 - 11a 6Mbps:-97dBm, 11a 54Mbps:-78dBm
 - 11ac HT20 MCS8:-74dBm, 11ac HT40 MCS9:-69dBm, 11ac HT80 MCS9:-65dBm
 - 11ax HE20 MCS0: -97dBm, 11ax HE20 MCS11: -66dBm
 - 11ax HE40 MCS0: -94dBm, 11ax HE40 MCS11: -63dBm
 - 11ax HE80 MCS0: -91dBm, 11ax HE80 MCS11: -60dBm
 - 11ax HE160 MCS0: -88dBm, 11ax HE160 MCS11: -58dBm
- Wireless Function: Enable/Disable Wireless Radio, WMM, Wireless Statistics
- Wireless Security: WPA/WPA2-Personal, WPA2/WPA3-Personal, WPA/WPA2-Enterprise

Specifications (E5)

Hardware (E5)

- Ports: 1× Power Port
- LED & Button: Status LED and WPS button (on front panel)



Level
Ensuring horizontal installation

A Plastic Bracket
Hang the extender on the wall

3M Adhesives On the Two Sides
Paste the extender to the wall

Type-C Power Port

Wireless

- **Wireless:** 2402 Mbps (5 GHz) + 574 Mbps (2.4 GHz), compatible with 11a/b/g/n/ac/ax Wi-Fi standards
- **Frequency:** 2.4 GHz and 5 GHz
- **Transmit Power:**
CE: <20 dBm (2.4 GHz); <23 dBm (5.15 GHz~5.25 GHz);
- **Reception Sensitivity:**
2.4GHz:
11ax HE20 MCS0: -95 dBm, 11ax HE20 MCS11: -65 dBm
11ax HE40 MCS0: -93 dBm, 11ax HE40 MCS11: -62 dBm
5GHz:
11ax HE20 MCS0: -97 dBm, 11ax HE20 MCS11: -66 dBm
11ax HE40 MCS0: -94 dBm, 11ax HE40 MCS11: -63 dBm
11ax HE80 MCS0: -91 dBm, 11ax HE80 MCS11: -60 dBm
11ax HE160 MCS0: -88 dBm, 11ax HE160 MCS11: -58 dBm
- **Wireless Function:** Smart Antennas, Enable/Disable Wireless Radio, Access Control, LED Control, Power Schedule, Wi-Fi Coverage Adjustment
- **Wireless Security:** WPA, WPA2-PSK, WPA3
- **Mesh Technology:** EasyMesh-Compatible

Specifications

Others

- Certification:

CE, RoHS

- System Requirements:

Microsoft Windows 98SE, NT, 2000, XP, Vista™ or Windows 7, 8, 8.1, 10, MAC OS, NetWare, UNIX or Linux

Internet Explorer 11, Firefox 12.0, Chrome 20.0, Safari 4.0, or other Java-enabled browser

- Environment:

Operating Temperature: 0°C~40°C (32°F ~104°F)

Operating Humidity: 10%~90% non-condensing

- Package Contents

1 wireless router Archer Air R5

2 range extenders Archer Air E5

3 power adapters

1 RJ45 Ethernet cable

3 plastic brackets

3 levels

Installation accessories

Quick installation guide



For more information, please visit

[https://www.tp-link.com/products/details/?model=Archer+Air+R5+\(3-pack\)_V1](https://www.tp-link.com/products/details/?model=Archer+Air+R5+(3-pack)_V1)

or scan the QR code left

This device complies with part 15 of the FCC Rules. Operation is subject to the following two conditions: (1) This device may not cause harmful interference, and (2) this device must accept any interference received, including interference that may cause undesired operation.

Attention: This device may only be used indoors in all EU member states, EFTA countries and Northern Ireland.

Attention: This device may only be used indoors in Great Britain.

Specifications are subject to change without notice. All the brands and product names are trademarks or registered trademarks of their respective holders.

[†]Maximum wireless signal rates are the physical rates derived from IEEE Standard 802.11 specifications. Actual wireless data throughput and wireless coverage are not guaranteed and will vary as a result of network conditions, client limitations, and environmental factors, including building materials, obstacles, volume and density of traffic, and client location.

[‡]Use of Wi-Fi 6 / 802.11ax and features including 160 MHz Bandwidth, 1024-QAM, OFDMA, and MU-MIMO requires clients to support the corresponding features. §Smart Roaming is designed for devices that support the 802.11k/v standard.

[§]HomeShield includes the Free Basic Plan. Fees apply for the Pro Plan. Visit [tp-link.com/homeshield](https://www.tp-link.com/homeshield) for more information.

^{*}Archer Air E5 does not support the related features.

^{**}Use of WPA3 requires clients to support the corresponding features.

^{***}Saving clients' battery power requires clients to also support the 802.11ax Wi-Fi standard. Actual power reduction may vary as a result of network conditions, client limitations, and environmental factors.

Actual network speed may be limited by the rate of the product's Ethernet WAN or LAN port, the rate supported by the network cable, Internet service provider factors and other environmental conditions.

TP-Link EasyMesh-compatible products can network with other devices that use EasyMesh. Failed connections may be due to firmware conflicts of different vendors. The EasyMesh-Compatible function is still being developed on some models and will be supported in subsequent software updates.

Pictures are for reference only. If there are any inconsistencies between the product image and the actual product, the actual product shall prevail.

©2023 TP-Link