



# AX3000

## Dual Band Gigabit Wireless Access Point

Next-Gen Wi-Fi for More Devices



TL-WA3001



2402 Mbps 5 GHz +  
574 Mbps 2.4 GHz†



Flexible Deployment  
with Passive PoE



Beamforming for  
Greater Coverage



Captive Portal  
Marketing



WPA3 reinforces  
Wi-Fi encryption for  
improved security\*

# Highlights

## Wi-Fi 6= Faster. Broader. Unstoppable.

Based on the next generation 802.11ax Wi-Fi technology, TL-WA3001 takes your Wi-Fi to the next level while being backwards compatible with 802.11a/b/g/n/ac Wi-Fi standards.



### Super Fast Wi-Fi

Enjoy full access to 8K streaming and high-speed downloading with HE160 on the 5 GHz band providing doubled bandwidth.<sup>‡</sup>



### Connect Numerous Devices

Allow more applications to run at the same time. OFDMA transmits data to multiple devices simultaneously across 4 streams, drastically reducing latency.<sup>‡</sup>



### Smart Power Saving

Conserve the power of your mobile devices by scheduling the connection time of battery-powered devices with Target Wake Time.<sup>‡</sup>

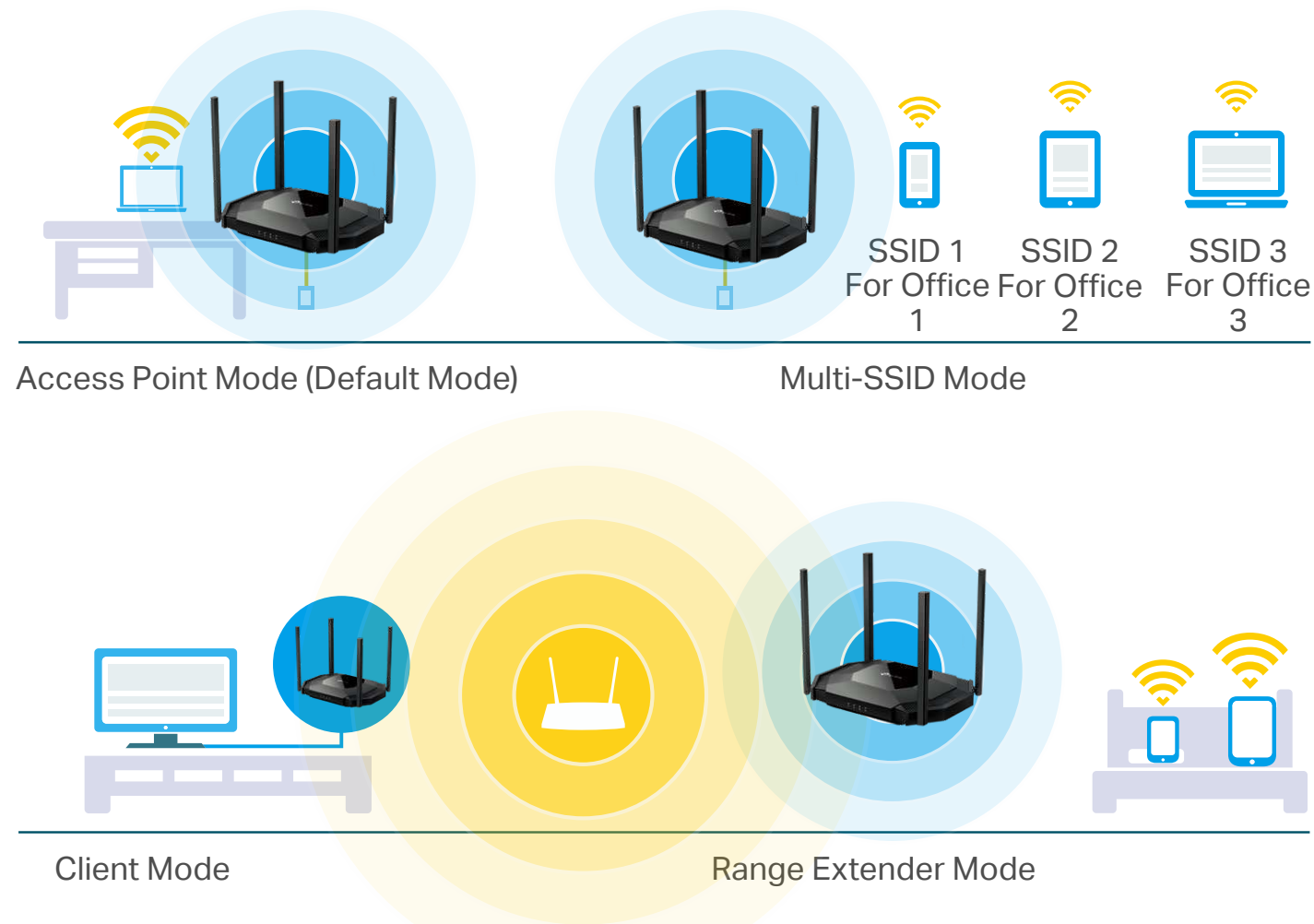


### Backwards Compatible

Take your Wi-Fi to the next level while being backwards compatible with 802.11a/b/g/n/ac Wi-Fi standards.

## Multi-Mode 4 in 1

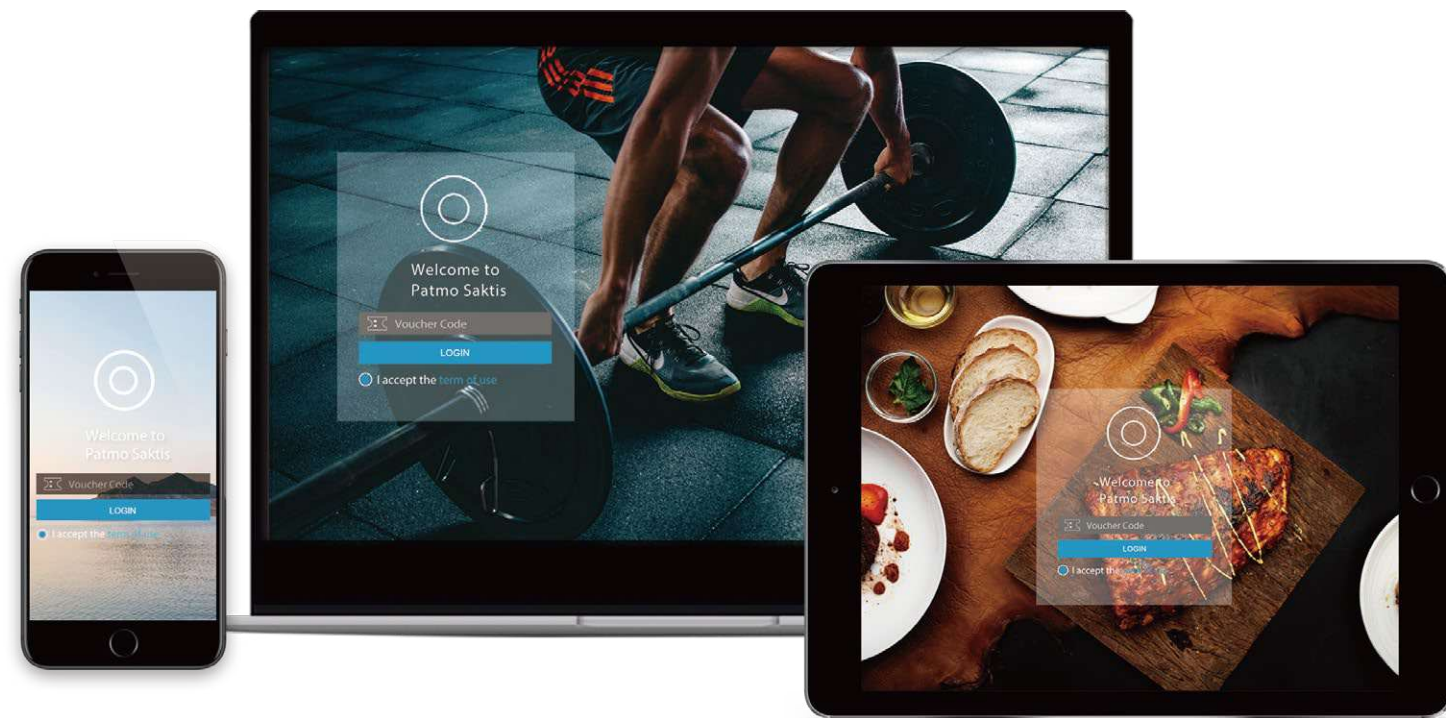
TL-WA3001 supports multiple operation modes: Access Point, Client, Range Extender and Multi-SSID (VLAN Support) modes to meet any network need.



## Highlights

### Captive Portal Marketing, Designed for Small Businesses

Captive Portal offers unique marketing opportunities, especially for small businesses like cafes or pharmacies. Utilize a flexibly designed portal page—requiring customers to view an advertisement or accept a set of terms for internet access—to improve brand awareness or deliver marketing messages.



### WPA3 Security

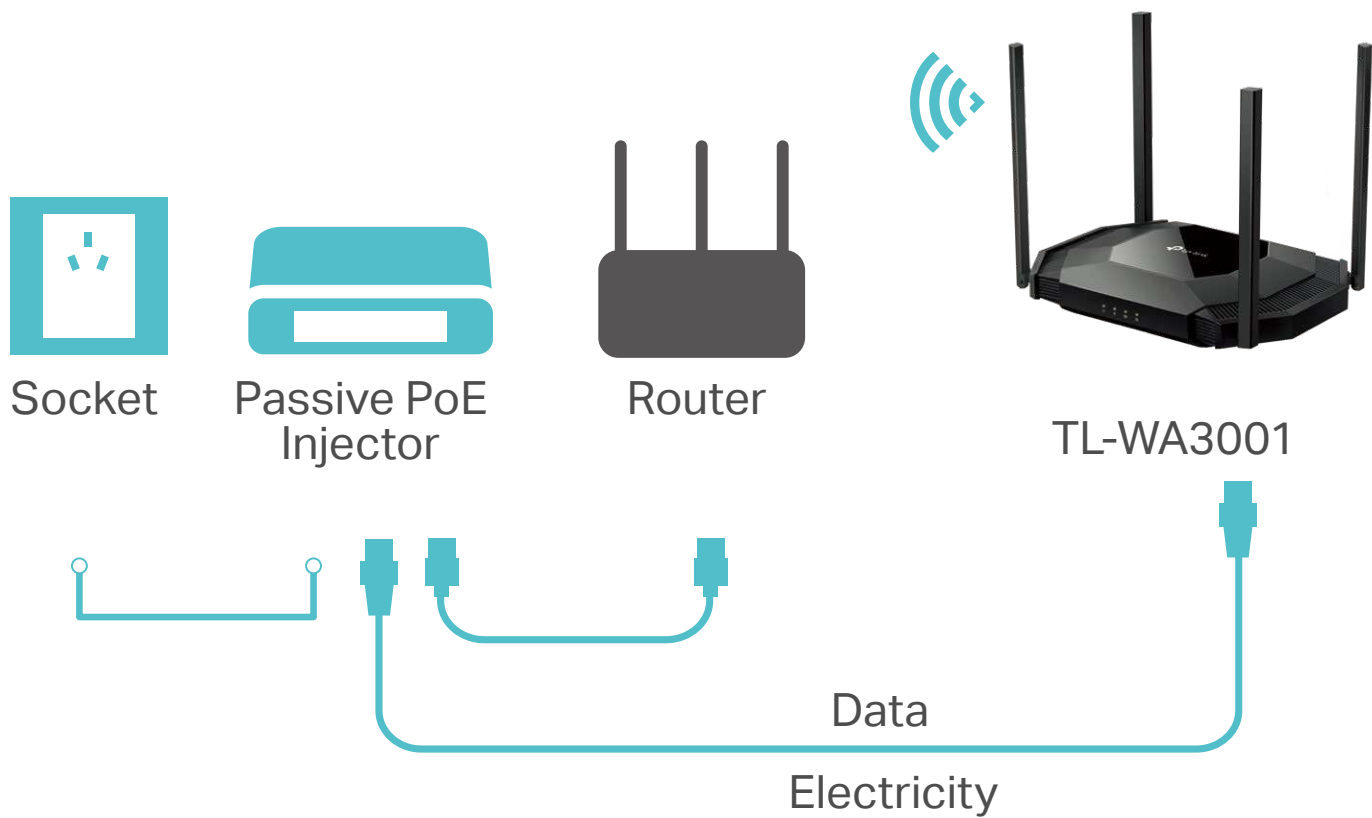
The latest Wi-Fi security protocol, WPA3, brings new capabilities to improve cybersecurity. More secure encryption in Wi-Fi password safety and enhanced protection against brute-force attacks combine to safeguard your home Wi-Fi.\*



# Highlights

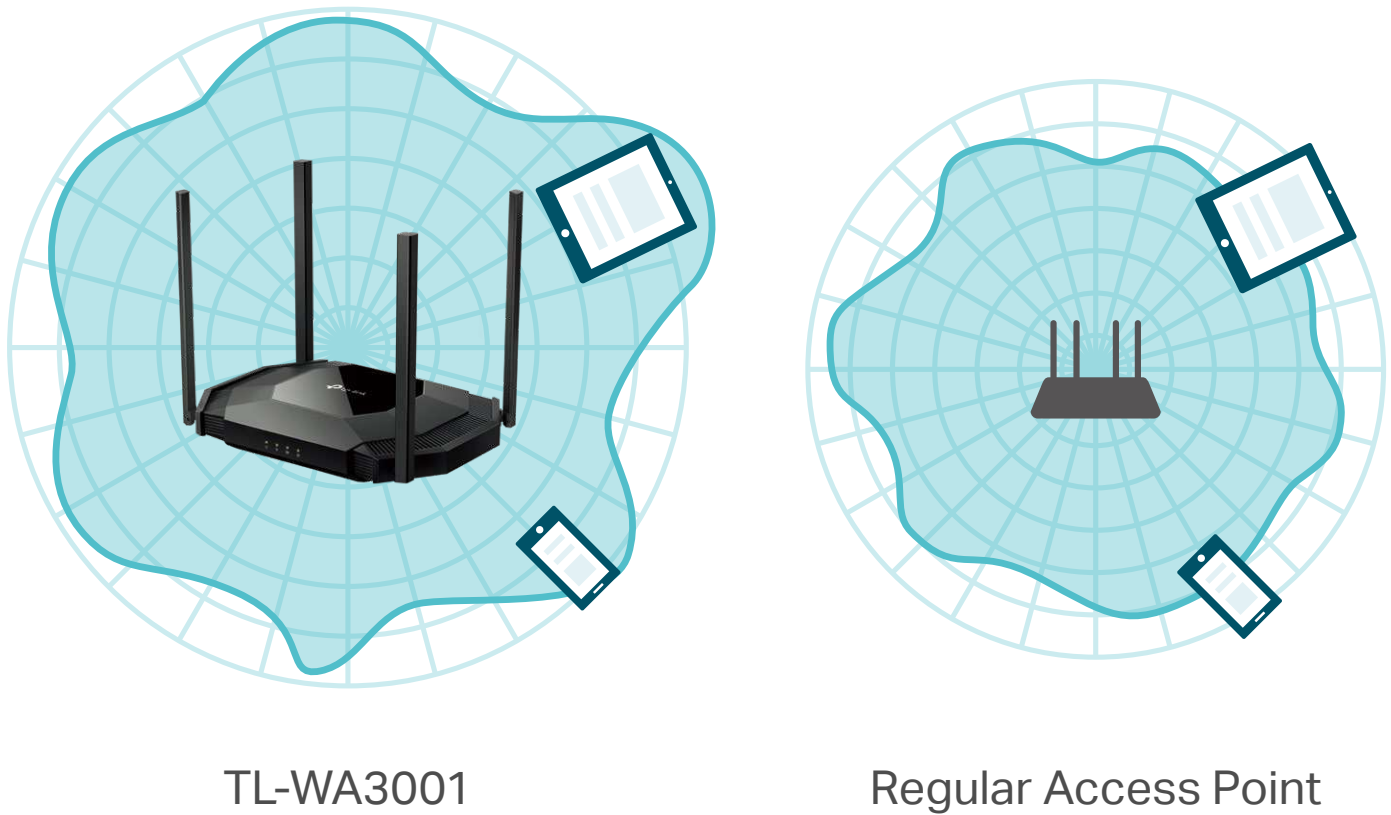
## Passive PoE for More Flexible Deployment

The TL-WA3001 can be powered using an Ethernet cable to simultaneously send data and electricity to wherever your Access Point may be located even up to 100 feet away.\*\*



## Vast Wi-Fi Coverage

Beamforming technology concentrates Wi-Fi towards devices to create stronger connections. Four external antennas deliver Wi-Fi to every corner of your home†.



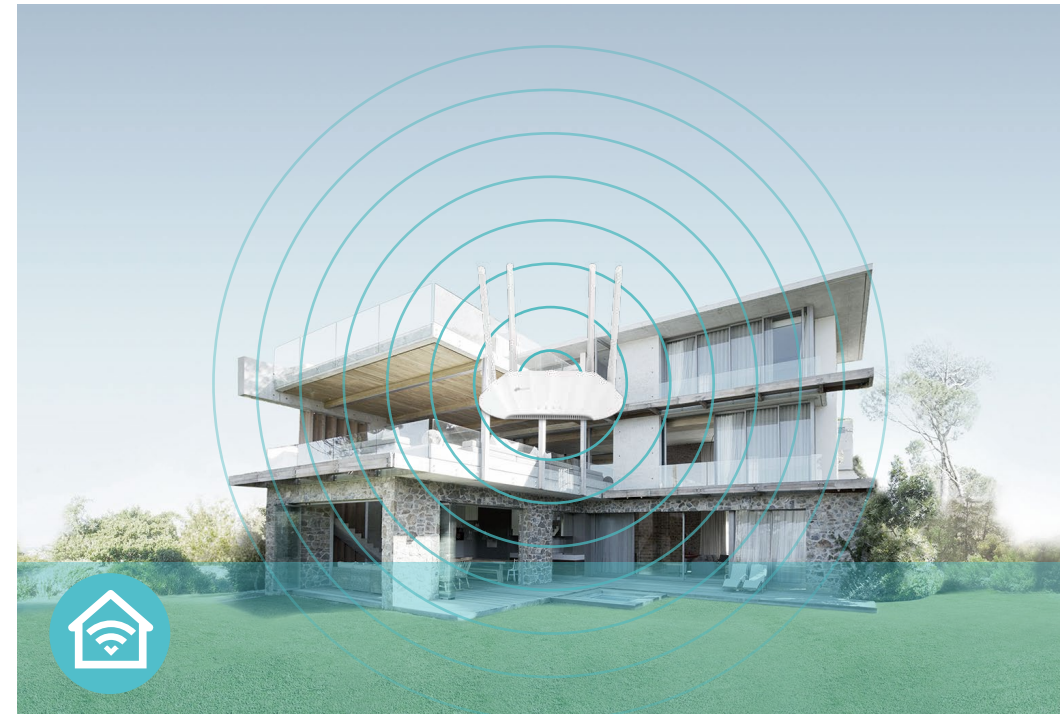


# Features



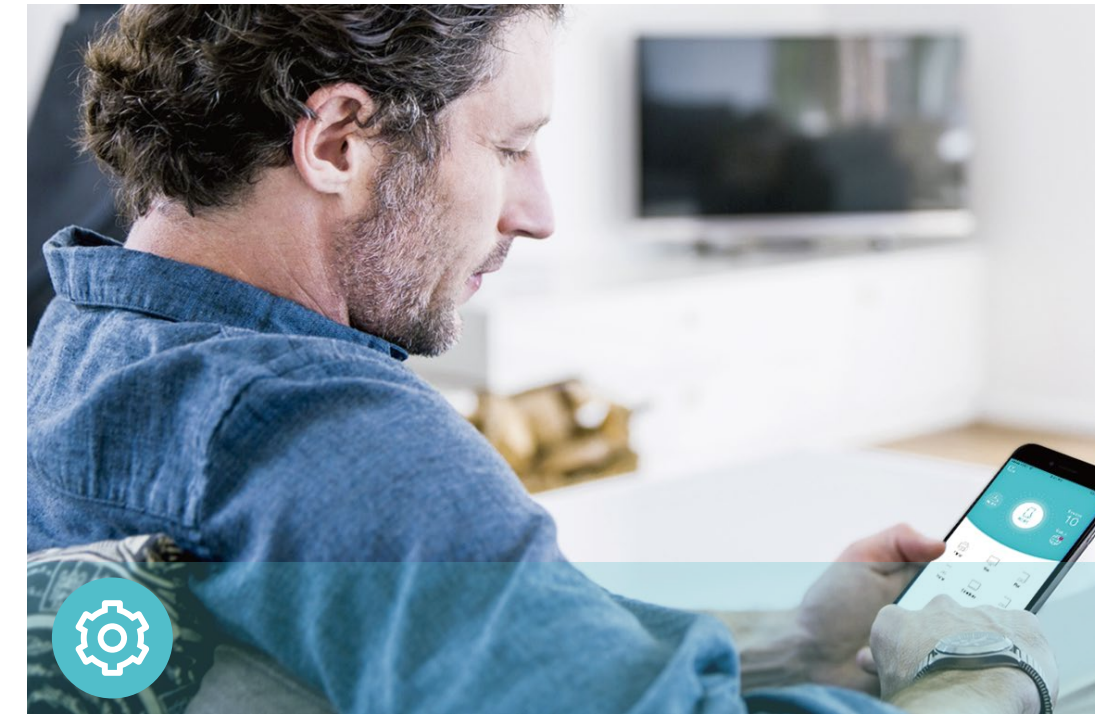
## Speed

- Ultimate Wireless Speed – 574 Mbps on 2.4 GHz + 2402 Mbps on 5 GHz
- Gigabit Ethernet Port – Make full use of the gigabit broadband speed



## Wi-Fi Range

- Ultimate Range Wi-Fi – Four high-gain external antennas deliver a Wi-Fi signal to every corner of your home, making all of your connections more efficient and stable
- Beamforming Technology – Sends targeted Wi-Fi signal to individual devices for stronger connections



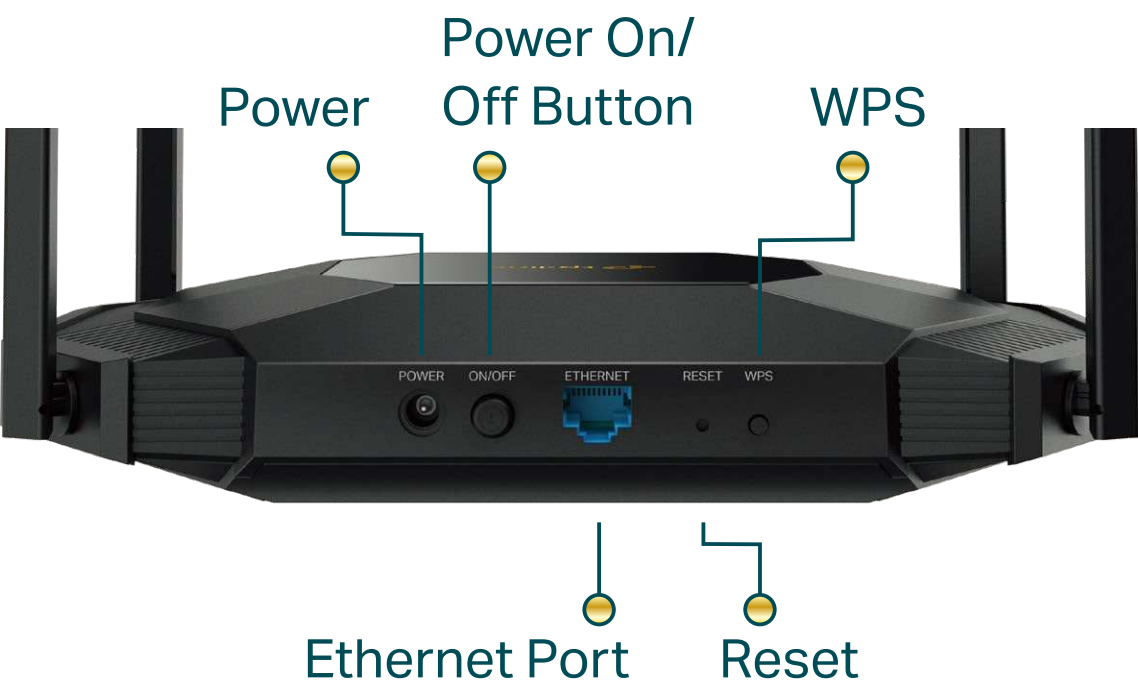
## Ease of Use

- Multi-Mode – Supports Access Point, Client, Range Extender and Multi-SSID (VLAN Support) modes to meet any network need
- Intuitive Web UI – Ensures quick and simple installation without hassle
- WPS – Makes secure wireless connection quick and easy with the push of a WPS button
- Quick Wi-Fi Sharing – Generates a QR code from Web UI to quickly share Wi-Fi with your guests

# Specifications

## Hardware

- Ethernet Port: 1 Gigabit Port (Supports Passive PoE)
- Buttons: Power On/Off Button, WPS Button, Reset Button
- Antennas: 4 Fixed High Antennas
- External Power Supply: 48 V / 0.375 A
- Dimensions (W x D x H): 9.4x6.5x1.7 in (240x165x43.6mm)



## Wireless

- Wireless: IEEE802.11b/g/n/ax 2.4 GHz, IEEE 802.11a/n/ac/ax 5 GHz
- Frequency: 2.4 GHz and 5 GHz
- Signal Rate: 2402 Mbps on 5 GHz + 574 Mbps on 2.4 GHz<sup>†</sup>
- Transmit Power:  
CE: <20dBm(2.4GHz), <23dBm(5.15GHz~5.35GHz), <30dBm(5.47GHz~5.725GHz)  
FCC: <30dBm(2.4GHz&5.15GHz ~5.25&5.725GHz~5.825GHz)
- Reception Sensitivity:  
5 GHz:  
11ax HE20 MCS0:-97dBm, 11ac VHT20 MCS9:-73dBm, 11ax HE20 MCS11:-67dBm  
11ax HE40 MCS0:-94dBm, 11ac VHT40 MCS9:-70dBm, 11ax HE40 MCS11:-63dBm  
11ax HE80 MCS0:-91dBm, 11ac VHT80 MCS9:-66dBm, 11ax HE80 MCS11:-60dBm  
11ac VHT160 MCS9:-63dBm, 11ax HE160 MCS11:-58dBm  
2.4 GHz:  
11ac VHT20 MCS0:-97dBm, 11ac VHT20 MCS8:-73dBm, 11ax HE20 MCS11:-65dBm  
11ac VHT40 MCS0:-93dBm, 11ac VHT40 MCS9:-69dBm, 11ax HE40 MCS11:-62dBm
- Wireless Function:  
Enable/Disable Wireless Radio, WMM, Wireless Statistics, Access Control
- Wireless Security:  
WPA, WPA2, WPA3, WPA/WPA2-Enterprise encryptions

# Specifications

## Software

- Quality of Service: WMM
- DHCP: Server, DHCP Client List
- Wireless Modes: Access Point, Range Extender, Client, Multi-SSID
- Protocols: IPv4, IPv6
- System Tools: SNMP, Ping Watch Dog



For more information, please visit  
[https://www.tp-link.com/products/details/?model=TL-WA3001\\_V1.2](https://www.tp-link.com/products/details/?model=TL-WA3001_V1.2)  
or scan the QR code left

This device complies with part 15 of the FCC Rules. Operation is subject to the following two conditions: (1) This device may not cause harmful interference, and (2) this device must accept any interference received, including interference that may cause undesired operation. Specifications are subject to change without notice. All the brands and product names are trademarks or registered trademarks of their respective holders.

<sup>†</sup>Maximum wireless signal rates are the physical rates derived from IEEE Standard 802.11 specifications. Actual wireless data throughput and wireless coverage are not guaranteed and will vary as a result of network conditions, client limitations, and environmental factors, including building materials, obstacles, volume and density of traffic, and client location.

<sup>‡</sup>Use of 802.11ax (Wi-Fi 6) and its features including OFDMA, HE160, and TWT requires clients to also support corresponding features. The 160 MHz bandwidth may be unavailable in the 5 GHz band in some regions/countries due to regulatory restrictions. Actual power reduction by Target Wake Time may vary as a result of network conditions, client limitations, and environmental factors.

<sup>§</sup>Use of WPA3 requires clients to also support the corresponding feature.

<sup>||</sup>Only the Ethernet cable of UTP or higher specifications can reach 100 feet.

Actual network speed may be limited by the rate of the product's Ethernet WAN or LAN port, the rate supported by the network cable, Internet service provider factors and other environmental conditions.

©2024 TP-Link

## Others

- Certification:  
CE, FCC, RoHS
- System Requirements:  
Edge, Firefox, Chrome, Safari, or other JavaScript-enabled browser  
\*You are recommended to use the latest version  
  
Cable or DSL Modem (if needed)  
  
Subscription with an internet service provider (for internet access)
- Environment:  
  
Operating Temperature: 0°C ~ 40°C(32°F ~ 104°F)  
  
Operating Humidity: 10%~90% non-condensing
- Package Contents  
  
Wireless Access Point TL-WA3001  
  
Power Adapter  
  
RJ45 Ethernet Cable  
  
Quick Installation Guide  
  
PoE Power Injector

[www.tp-link.com](https://www.tp-link.com)