

## ALL IN CASE SAMSUNG GALAXY TAB A11+

Protect your device with our ultra-hard case, designed to withstand the most extreme conditions.



### RUGGED CASE + SHOULDER STRAP

FOR GALAXY TAB A11+  
(SM-X230 / SM-X236B)

Ref. 072008



#### REINFORCED CORNERS

**Absorb** shocks in the event of a fall

#### SILICONE EXTERIOR

**Anti-slip, anti-scratch** and **anti-shock** silicone coating



#### RIGID EDGE

**Rigid** protective edge to shield the screen in the event of a fall



#### ROTATIVE HAND STRAP

**360°** rotating hand strap



#### INTEGRATED TRIPOD

Landscape/video position

Weight : 390 g | Dimensions : 275 x 180 x 20 mm

**ACCESSORIES INCLUDED**

**Hand strap**



360° rotation



Landscape mode



Portrait mode

**Tripod**



Video/landscape position



Quick-release button for tripod

**Stylus holder**



Integrated on the hand strap  
*Stylus not included*

**Shoulder strap**



Shoulder strap included

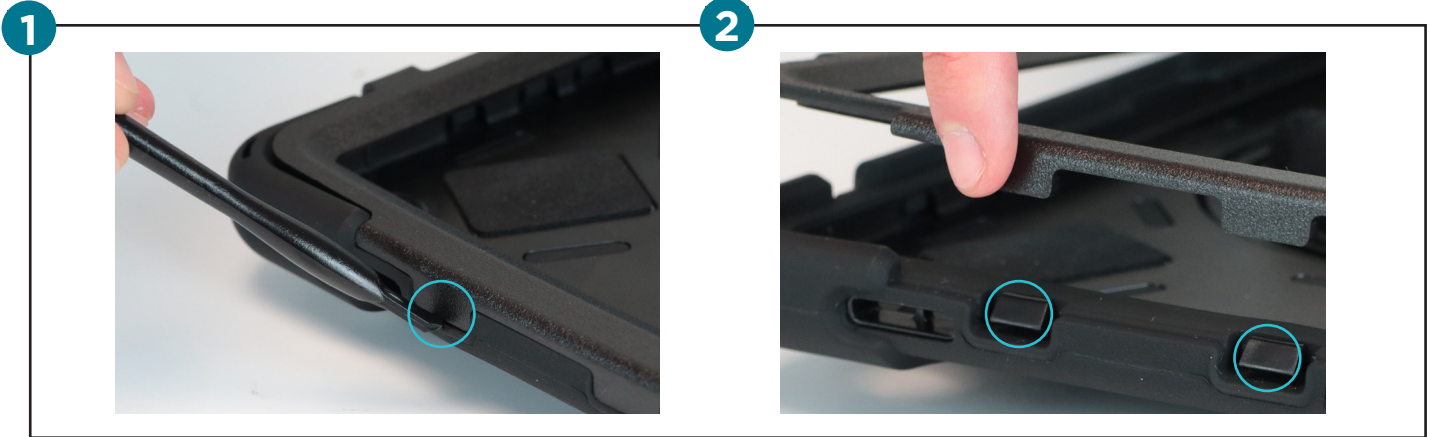
**REFERENCES**

Ref	Product	EAN code
072008	All in Case for Galaxy Tab A11+ / Galaxy Tab A9+ (11") + Shoulderstrap	3700992537627

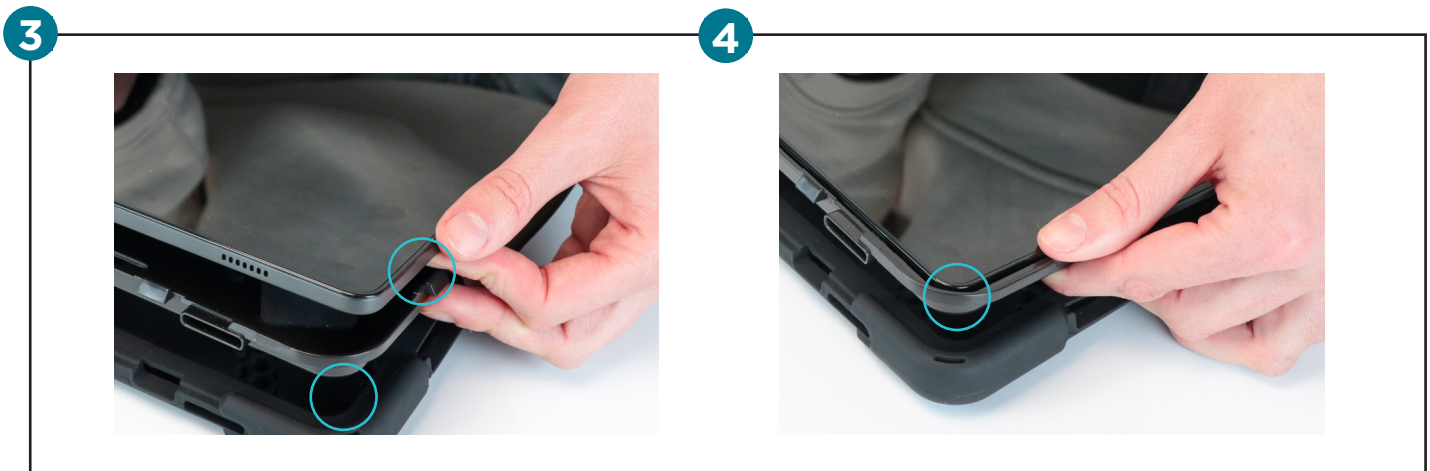
**INSTALLATION GUIDE**

REF. 072008

**PROTECTIVE CASE**



USE THE INSTALLATION TOOL TO UNLOCK THE FOUR SIDE CLIPS AND REMOVE THE HARD FRONT PANEL.



PLACE THE TABLET ON THE RIGID BACK PLATE, MAKING SURE THAT THE CAMERA LENS IS ALIGNED WITH THE CUT-OUT.



REPLACE THE SILICONE BASE AND CORNERS, THEN REPOSITION THE FRONT PANEL, INSERTING THE SIDES FIRST. THE SIDES FIRST. CONTINUE ALL THE WAY ROUND UNTIL ALL THE FIXING CLIPS ARE PROPERLY ENGAGED.

**INSTALLATION GUIDE**

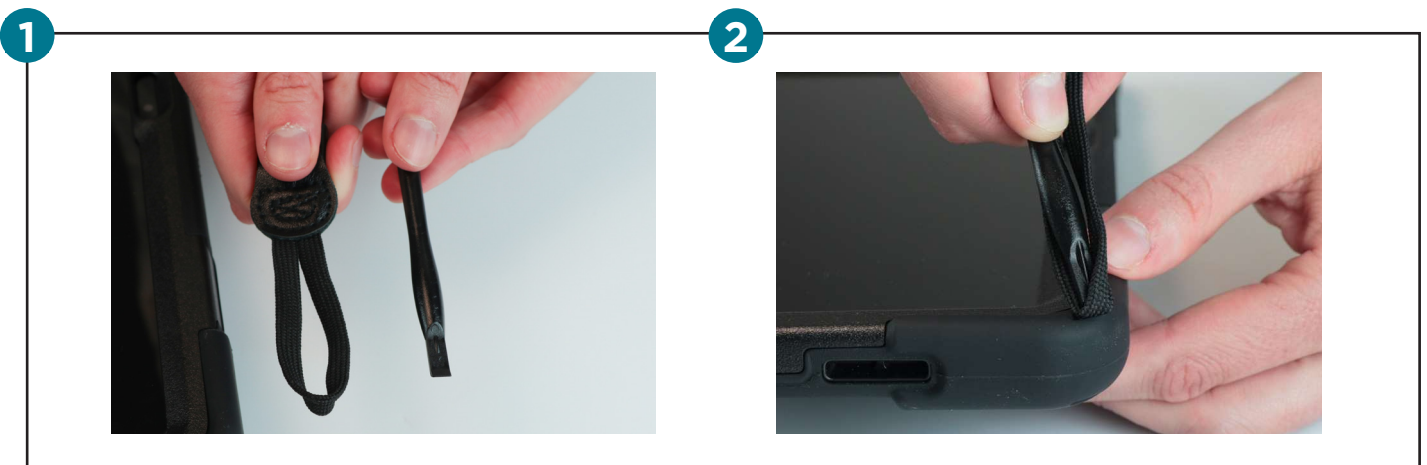
REF. 072008

**TRIPOD MODE**

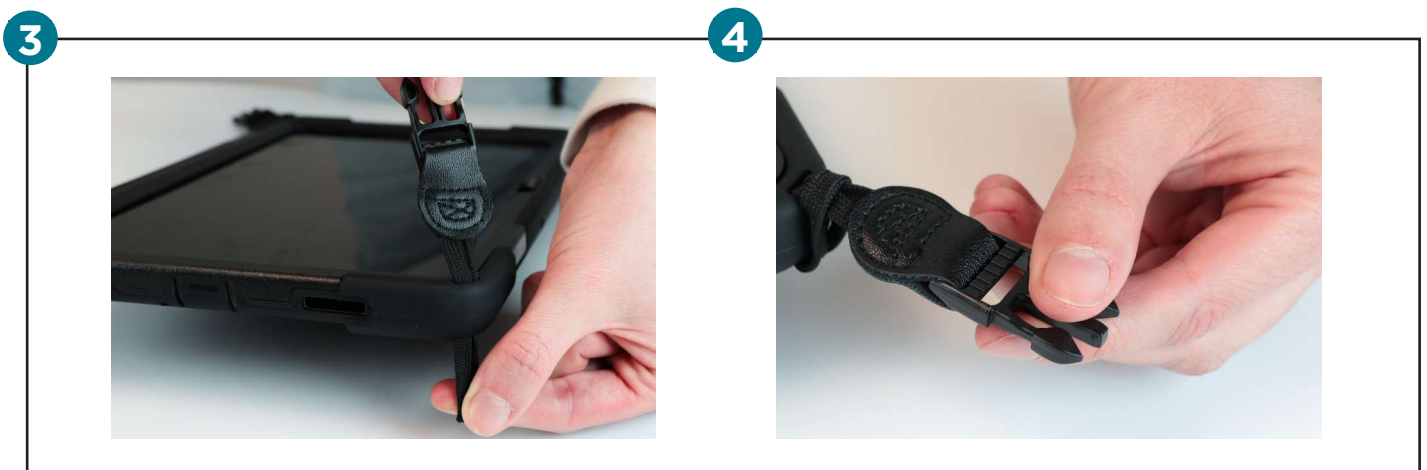


PULL OUT THE BRACKET AND INSERT IT INTO THE SLOT TO SECURE THE TRIPOD.  
TO STORE, SIMPLY PRESS THE BUTTON.

**SHOULDER STRAP**



PASS THE TOOL THROUGH THE CORD, THEN THREAD THE CORD THROUGH THE NOTCH UNTIL IT PASSES THROUGH  
THE SILICONE CASE.



PULL THE CORD AT BOTH ENDS, TIE A KNOT AND ATTACH THE LOOP TO THE REST OF THE SHOULDER STRAP.