



Wi-Fi 6

AX1500 Wi-Fi 6 Portable Router

Powerful Wi-Fi in Your Pocket



TL-WR1502X



Faster Wi-Fi Speed
up to 1.5 Gbps[†]



Easy File and
Internet Sharing



Pocket-Size
Design



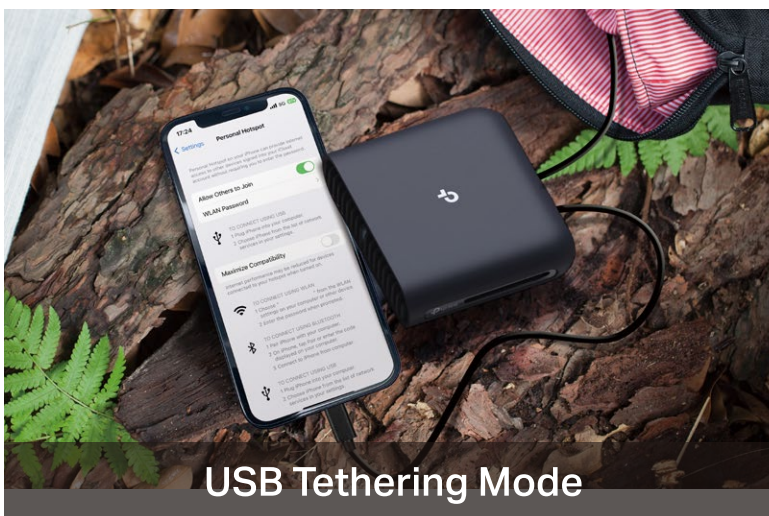
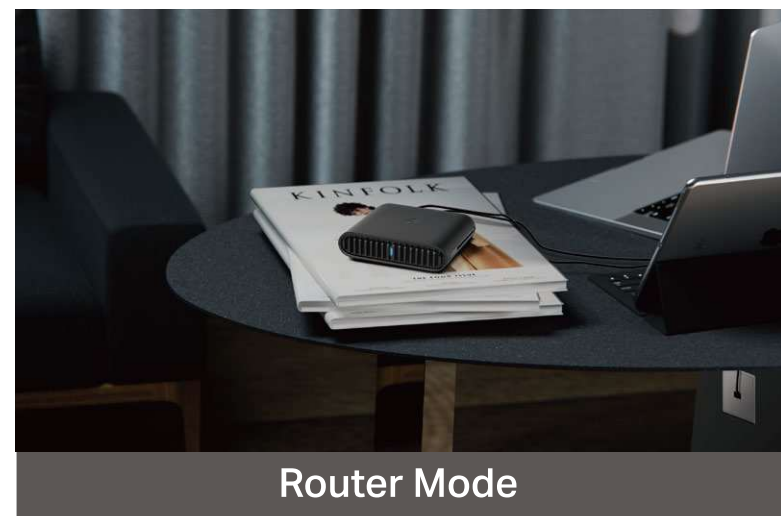
Secure Browsing
with VPN Encryption

Highlights

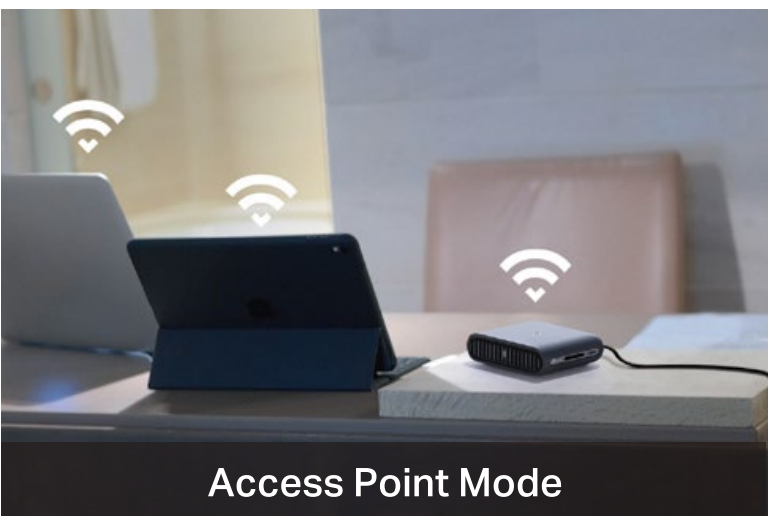
Creates a Private Network Wherever You Go

Supporting multiple modes (Router / AP / RE / Hotspot / Client / USB Tethering / 3G/4G USB Modem), TL-WR1502X allows you to create Wi-Fi in various scenarios at home, in hotel rooms, or on the road.

During Travel



At Home



Highlights

Wi-Fi 6 Travel Router

Merging Wi-Fi 6 Technology, TL-WR1502X is designed to deliver a huge boost in coverage, speed, and total capacity while on the go.

Easily Access Your Files From Anywhere

By plugging an external USB hard disc into the router, you can easily share files between connected devices.



Features

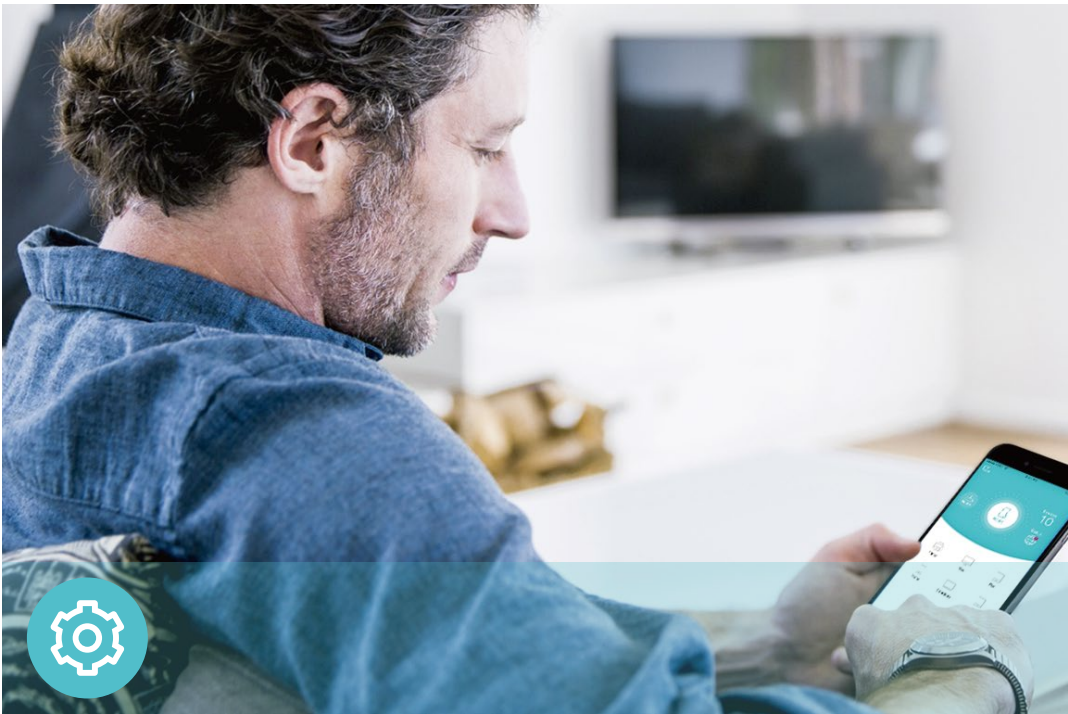


Reliability

- AX1500 Dual-Band Wi-Fi 6 Travel Router: – Merging Wi-Fi 6 Technology, TL-WR1502X delivers fast wireless speed (1201 Mbps on 5 GHz, 300 Mbps on 2.4 GHz) for uninterrupted video streaming, downloading, and online gaming all at the same time^{††}
- Easy Bandwidth Management– Bandwidth Control allocates necessary speed of each connected device to ensure quality of multimedia streaming



Scan the QR code to download TP-Link Tether.



Ease of Use

- Intuitive Web UI – Ensures quick and simple Installation without hassle
- Fast Encryption – One-touch WPA2 wireless security encryption with the WPS button
- USB 2.0 Port for Fast Sharing – A USB 2.0 port makes it easy to share photos, videos, and music across your home network. Through the router's FTP server, you can also access your files and media from network devices remotely
- Portable and Durable Design – TL-WR1502X is a pocket-sized travel router compactly designed for your next trip or adventure. Its small size is designed for travel-friendly storage
- Hassle-free Management with Tether App – Network management is made easy with the TP-Link Tether App, available on any Android and iOS device



Security

- 24/7 Secure Surfing with VPN Encryption – Supporting OpenVPN and WireGuard®, TL-WR1502X can keep your network private and secure from anywhere in the world, whether you're working remotely abroad, or browsing on the public WiFi
- Guest Network – Keeps your main network secure by creating a separate network for friends and visitors
- Access Control – Establishes an allow list or deny list to allow or restrict certain devices to access the internet
- Parental Controls – Restricts internet access time and contents for children devices
- Encryptions for Secure Network – WPA2/PSK and WPA3-Personal encryptions provide active protection against security threats

Specifications

Hardware

- Ports: 1× Gigabit WAN/LAN Port, 1× Gigabit LAN Port, 1× USB 2.0 Port, 1× Type-C Power Port
- Buttons: WPS/Reset Button, Mode Switch
- Antennas: Internal Antennas
- Dimensions: 4.1×3.6×1.2 in (105*91.3*30mm)

Wireless

- Wireless Standards: IEEE 802.11ax/ac/n/a 5GHz, IEEE 802.11b/g/n 2.4GHz
- Frequency: 2.4GHz and 5GHz
- Signal Rate: 300Mbps at 2.4GHz, 1201Mbps at 5GHz
- Transmit Power:

FCC: ≤ 30dBm (2.4G & 5.15GHz~5.24GHz & 5.735GHz~5.825GHz), ≤ 24dBm (5.26GHz~5.725GHz)

CE: ≤20dBm EIRP (2.4GHz); ≤23dBm EIRP (5.17GHz~5.35GHz); ≤30dBm EIRP (5.47GHz~5.725GHz)

- Reception Sensitivity:

2.4GHz

11b 1M:-96dBm

11n HT20M MCS7:-73dBm
11n HT40M MCS7:-70dBm

5GHz

11a 6M:-93dBm

11ax HE20M MCS11:-63dBm
11ax HE40M MCS11:-60dBm
11ax HE80M MCS11:-59dBm
- Wireless Function: Enable/Disable Wireless Radio, WMM, Wireless Statistics
- Wireless Security: WPA2/PSK, WPA3-Personal encryptions

Specifications

Software

- Protocols: IPv4, IPv6
- Parental Controls: Supported
- WAN Types: Dynamic IP, Static IP, PPPoE, PPTP, L2TP
- Quality of Service: QoS by Device
- Cloud Service: Auto Firmware Upgrade, TP-Link ID, DDNS
- NAT Forwarding: Port Forwarding, Port Triggering, DMZ, UPnP
- DDNS: TP-Link, NO-IP, DynDNS

Others

- Certification:
FCC, CE, RoHS
- System Requirements:
Microsoft Edge, Firefox, Chrome, Safari, or other JavaScript-enabled browser

*You are recommended to use the latest version
- Environment:

Operating Temperature: 0°C~40°C (32°F ~104°F)

Operating Humidity: 10%~90% non-condensing
- Package Contents

Wi-Fi 6 Portable Router TL-WR1502X

RJ45 Ethernet Cable

Power Adapter

USB Cable

Quick Installation Guide

Wi-Fi Info Card



For more information, please visit
https://www.tp-link.com/products/details/?model=TL-WR1502X_V1
or scan the QR code left

[†]Maximum wireless signal rates are the physical rates derived from IEEE Standard 802.11 specifications. Actual wireless data throughput, wireless coverage and number of connected devices are not guaranteed and will vary as a result of network conditions, client limitations, and environmental factors, including building materials, obstacles, volume and density of traffic, and client location.
[‡]Use of 802.11ax (Wi-Fi 6) and its features require clients to also support corresponding features. Actual power reduction by Target Wake Time may vary as a result of network conditions, client limitations, and environmental factors.
[§]The 802.11ax white paper defines standardized modifications to both the IEEE 802.11 physical layers (PHY) and the IEEE 802.11 Medium Access Control (MAC) layer as enabling at least one mode of operation capable of supporting improvement of at least four times the average throughput per station (measured at the MAC data service access point) in a dense deployment scenario.
* It is recommended to use the supplied power adapter. If you use other power adapters, there is a risk of damaging the device.
** Whether the USB Internet Sharing function can be used depends on the compatibility of the 3/4G USB Modem or mobile device, and is not guaranteed to be compatible with all devices.
Actual network speed may be limited by the rate of the product's Ethernet WAN or LAN port, the rate supported by the network cable, internet service provider factors, and other environmental conditions.
©2023 TP-Link